



AC1350 Wireless Dual Band Gigabit Router

Upgrade to Fast AC Wi-Fi and
gigabit connections



Archer C5 Pro



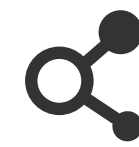
450 + 867 Mbps
Dual Band Wi-Fi



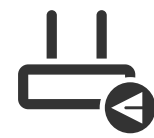
Gigabit
Ports



Beamforming



EasyMesh

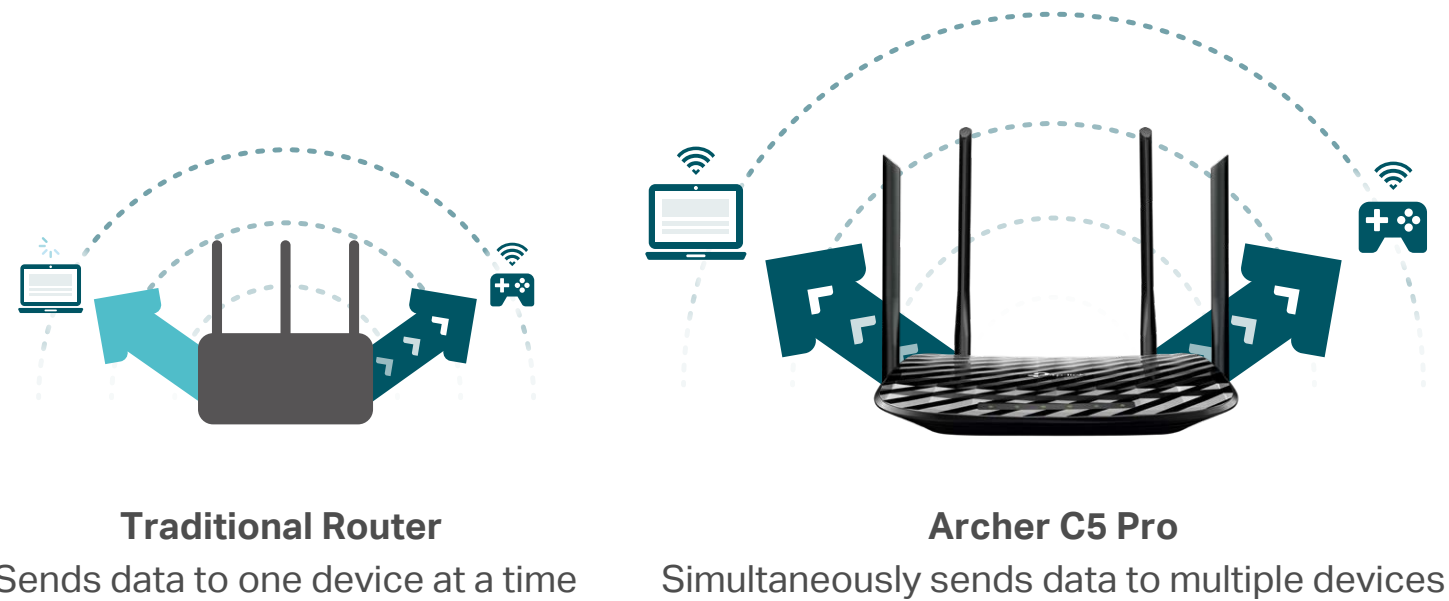


Remote
Management

Highlights

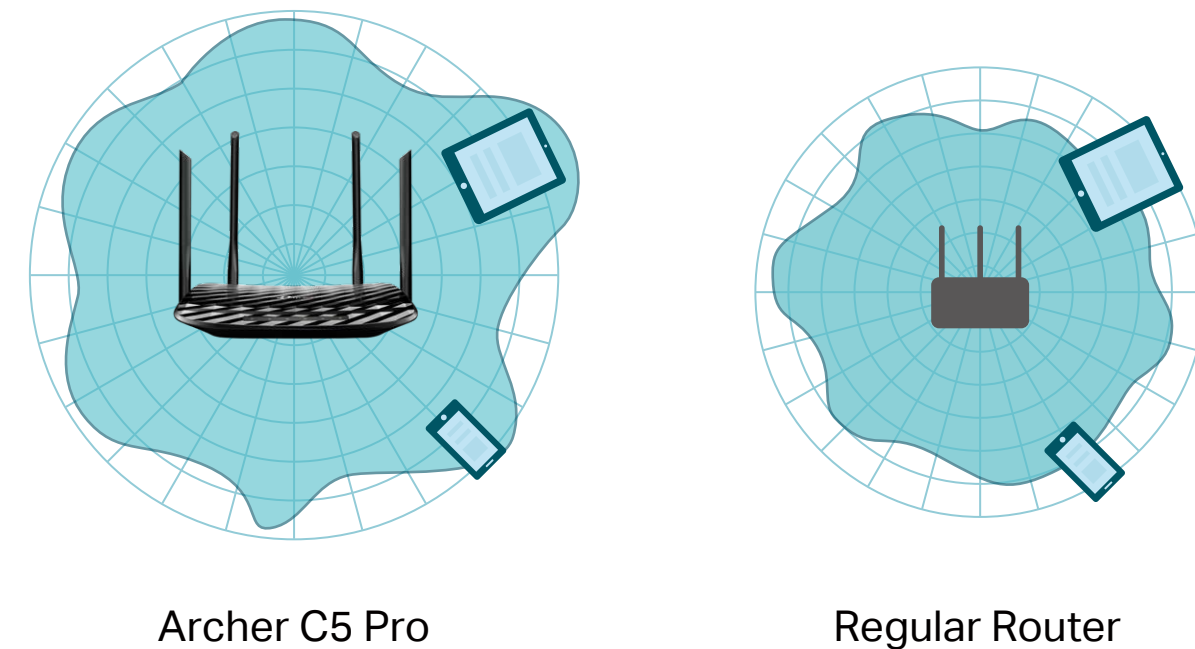
MU-MIMO for 2 x Faster Connections

MU-MIMO technology serves up to two devices at once, reducing wait time, increasing Wi-Fi throughput for every device, and making each stream more efficient.



Beamforming for Better Coverage

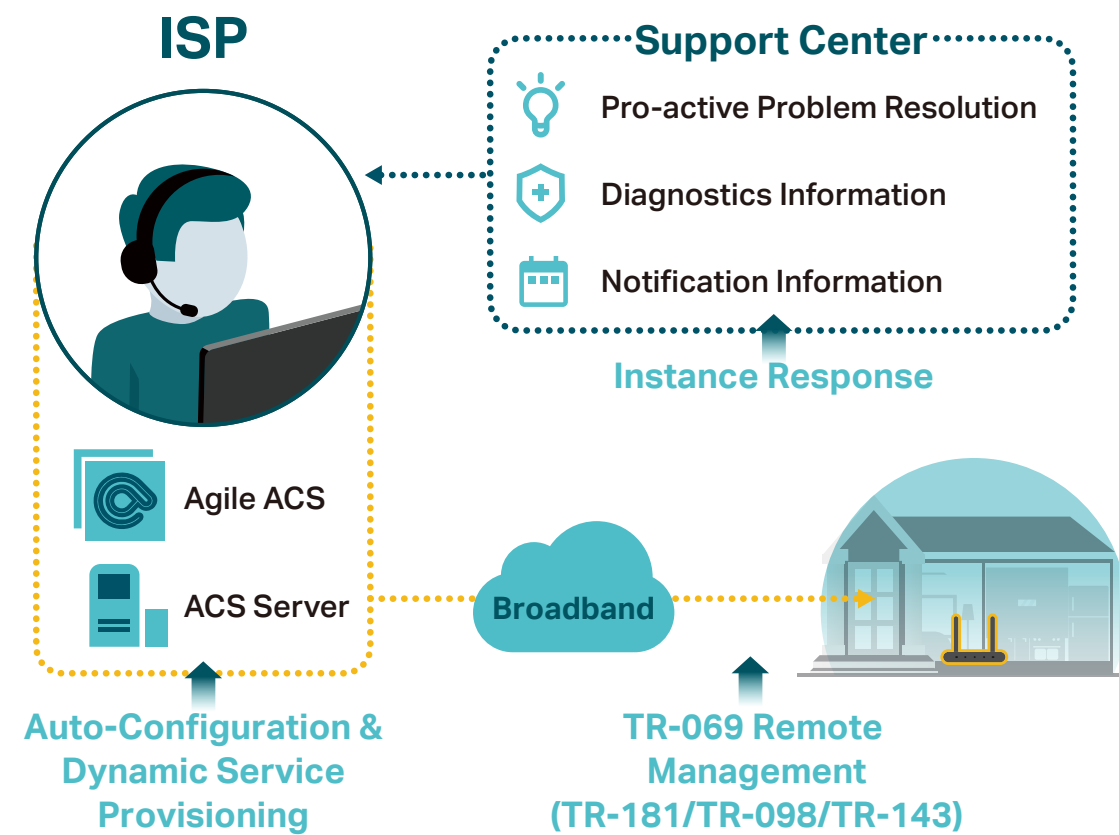
Beamforming technology detects the location of your connected devices and concentrates the Archer C5 Pro's Wi-Fi towards them to create stronger overall connections.



Highlights

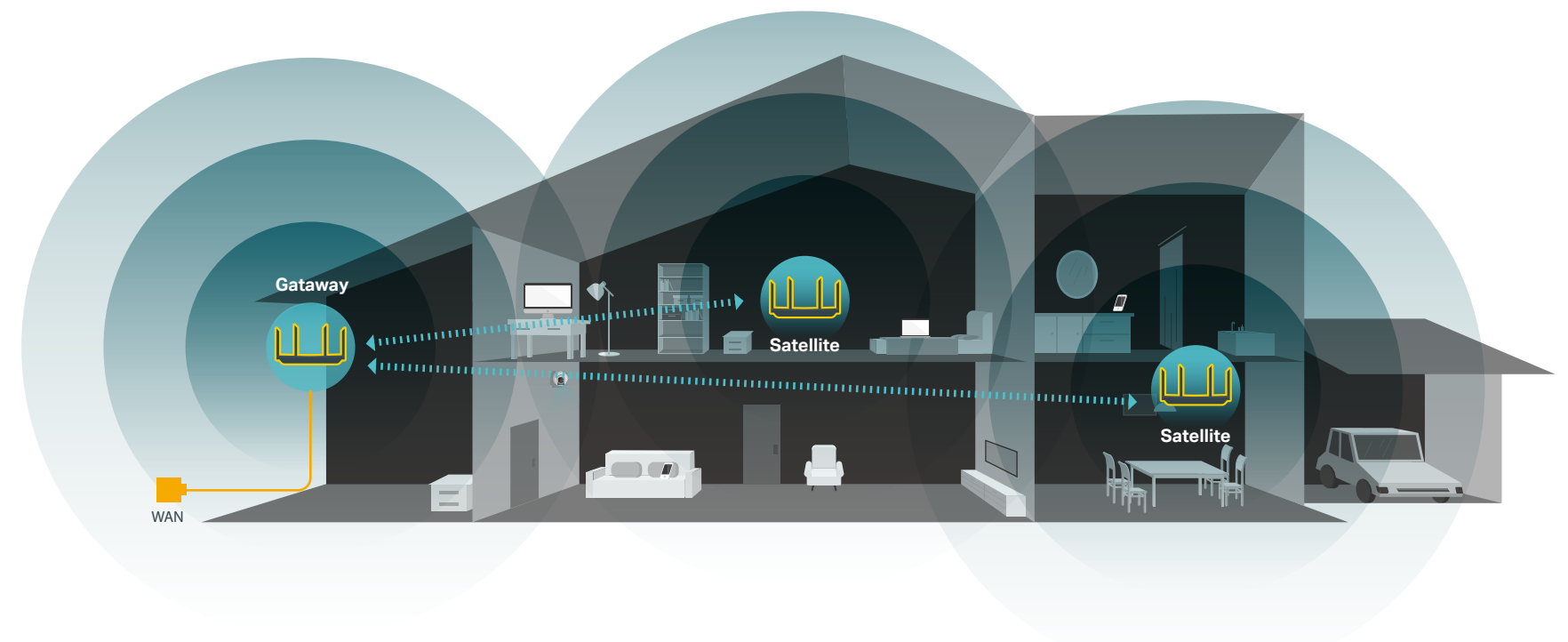
Support Agile ACS

Support TP-Link 's Agile ACS solution, helping ISPs to realize remote management, especially by its Auto-Configuration, Dynamic Service Provisioning and Auto firmware upgrade.



EasyMesh

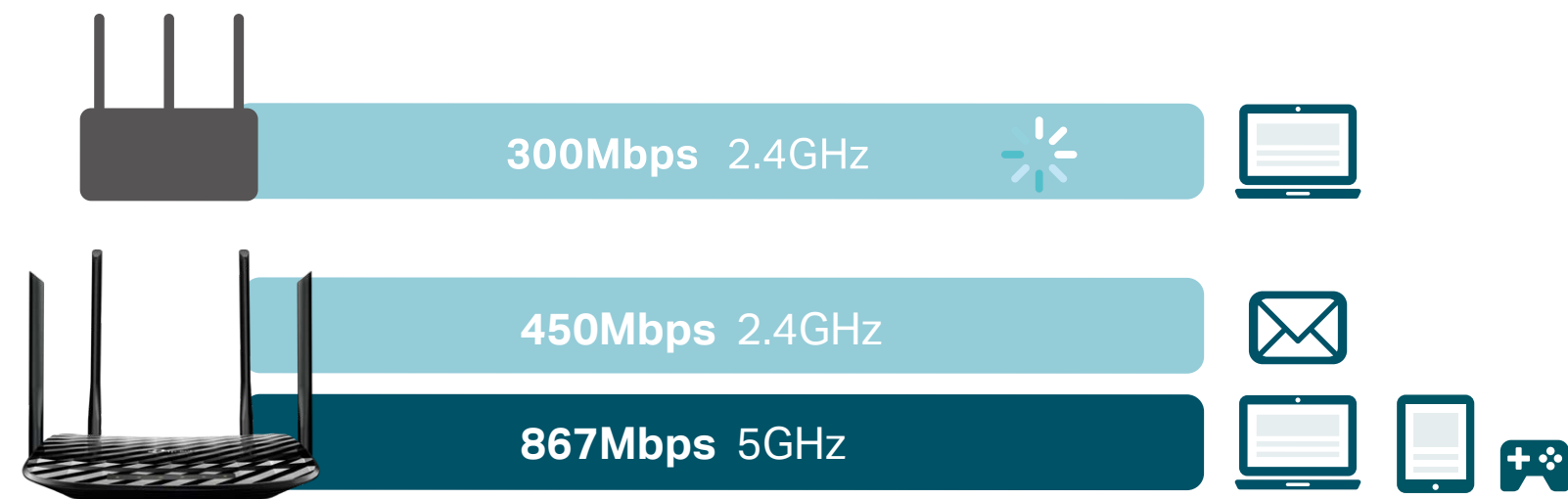
Compliant with WFA EasyMesh and provide a simple way to install and configure multiple AP networks. Enables devices to work together and provide an adaptive network of extended and uniform coverage, bringing added flexibility to both consumers and service providers.



Highlights

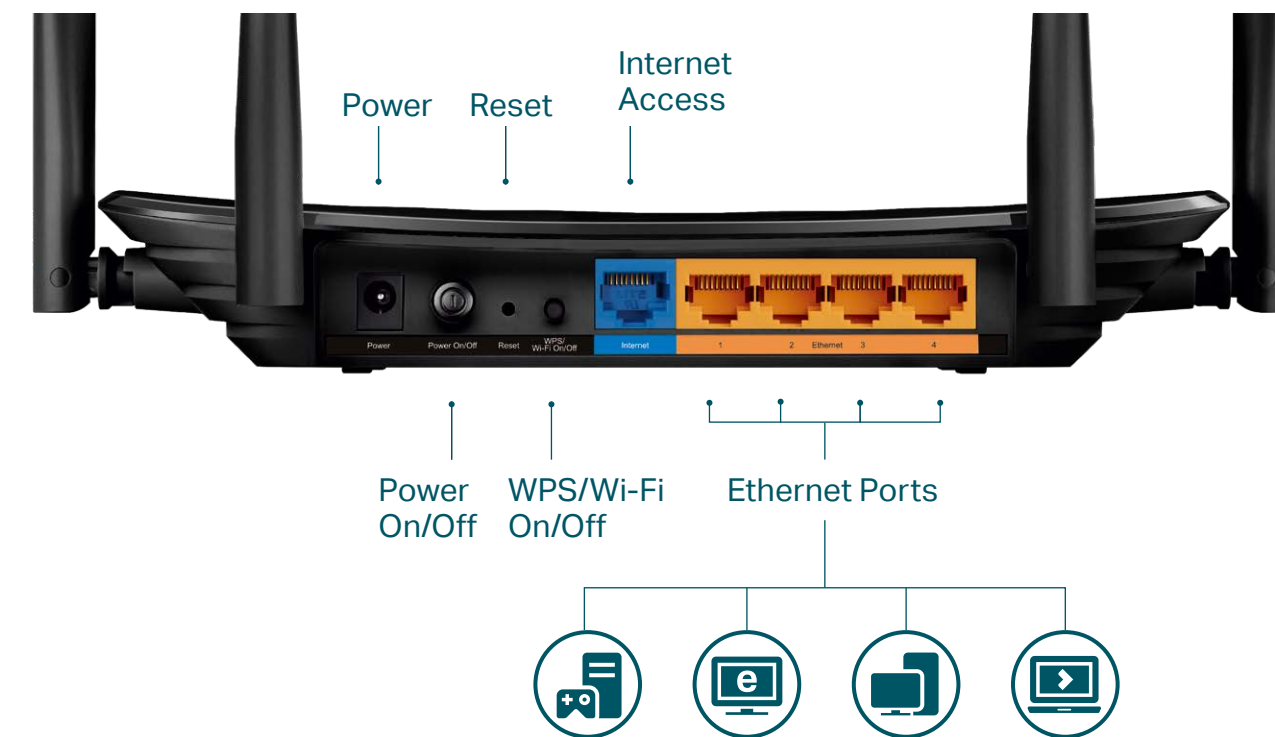
Faster Wi-Fi for More Device

2.4GHz and 5GHz bands run at fast AC1350 Wi-Fi speeds to deliver more bandwidth and support more devices in your home.



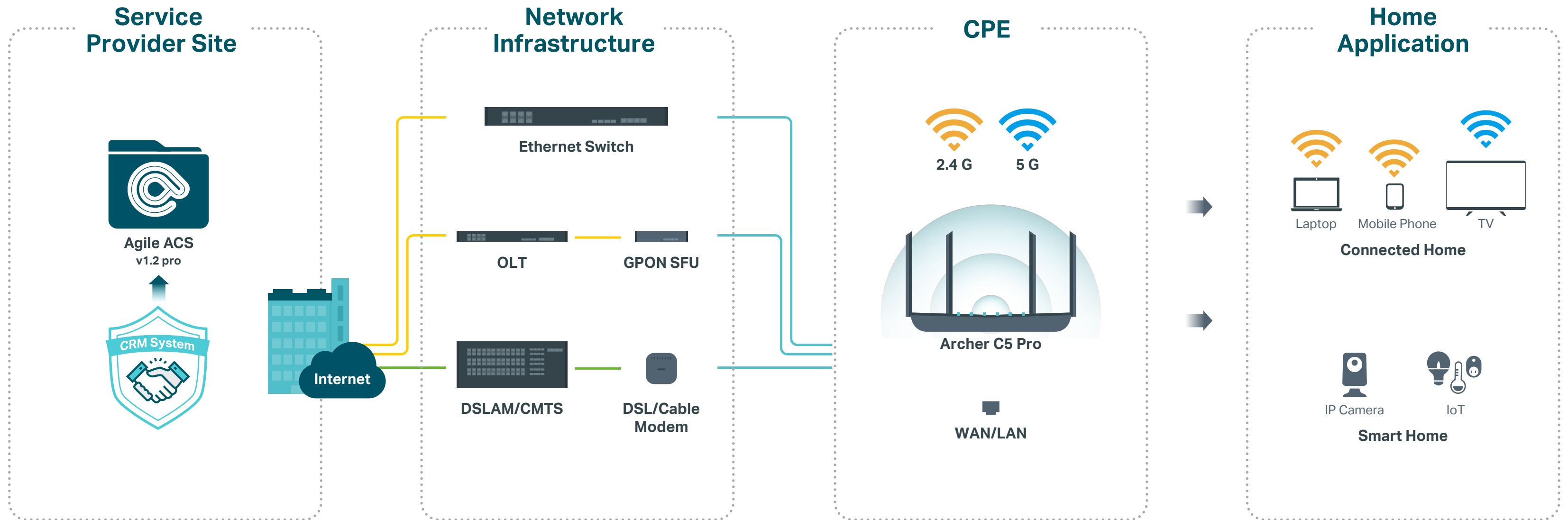
Gigabit Ethernet

Enjoy fast, reliable wired connections for gaming and streaming in the best quality.

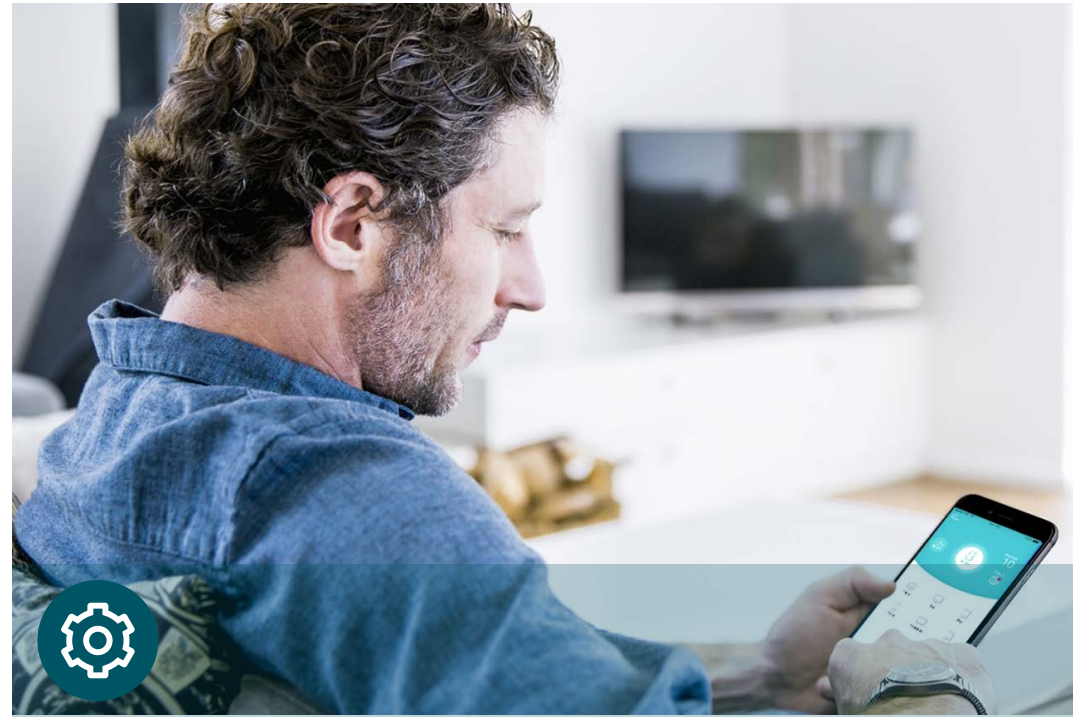


Application Diagram

- Fiber
- HFC
- RJ45 Cable



Features



Ease of Use

- Intuitive Web UI – Ensure quick and simple installation without hassle
- Fast Encryption – Quickly connect devices to Wi-Fi at the push of a button without entering the password



Reliability

- Ultimate Wireless Speed – 450Mbps Wi-Fi speed on 2.4GHz and 867Mbps Wi-Fi speed on 5GHz meet your daily internet needs
- MU-MIMO – Simultaneously transfer data to multiple devices for 2× faster
- Support 802.11 ac – Provide a data transfer rate 3 times faster than 802.11n for each stream
- IPTV – Support IGMP Proxy/Snooping, Bridge and Tag VLAN to optimize IPTV streaming



Security

- Active Defense – Protect your home network with firewalls and wireless encryption
- Multi-SSID – Provides different wireless access for different applications and services
- Access Control – Establish a whitelist or blacklist to allow or block certain devices from accessing the internet
- Parental Control – Manage when and how connected devices can access the internet

Specifications

Hardware

- Ethernet Ports: 4*10/100/1000Mbps LAN Ports, 1*10/100/1000Mbps WAN Port
- Buttons: Reset Button, Power On/Off Button, WPS/Wi-Fi On/Off Button
- Antennas: 4 Fixed Omni Directional Antennas
- External Power Supply: 12V/1A
- Dimensions (W x D x H): 9.1 × 5.7 × 1.4 in (230 × 144 × 35 mm)

Wireless

- Wireless Standards: IEEE 802.11ac/n/a 5GHz, IEEE 802.11b/g/n 2.4GHz
- Frequency: 2.4GHz and 5GHz
- Signal Rate:
 - 5GHz: Up to 867Mbps
 - 2.4GHz: Up to 450Mbps
- Wireless Function: Enable/Disable Wireless Radio, WDS Bridge, WMM, Wireless Schedule, Wireless Statistics, AP mode
- Mesh Technology: WFA EasyMesh
- Wireless Security: 64/128-bit WEP, WPA / WPA2, WPA-PSK/ WPA2-PSK encryption

Software

- WAN Type: Multi- EWAN, Dynamic IP, Static IP, PPPoE, PPTP, L2TP
- DHCP: Server, DHCP Client List, Address Reservation
- Port Forwarding: Virtual Server, Port Triggering, UPnP, DMZ
- VPN Passthrough: PPTP, L2TP, IPSec
- VPN Server: PPTP, OpenVPN
- Dynamic DNS: DynDns, NO-IP
- Access Control: Parental Control, Local Management Control, Host List, White List, Black List
- Firewall Security: DoS, SPI Firewall, IP and MAC Address Binding
- Protocols: IPv4, IPv6
- Management: Access Control, Local Management, Remote Management, TR-069, TR-098, TR181, TR-111, TR143
- APP Management: Tether

Specifications

Others

- Package Contents

Wireless Router Archer C5 Pro

Power Adapter

RJ45 Ethernet Cable

Quick Installation Guide

- Certification

CE, RoHS

- Environment

Operating Temperature: 0°C~40°C (32°F ~104°F)

Storage Temperature: -40°C~70°C (-40°F ~158°F)

Operating Humidity: 10%~90% non-condensing

Storage Humidity: 5%~90% non-condensing

- System Requirements

Microsoft Windows 10/8.1/8/7/Vista/XP/2000/NT/98SE, MAC OS, NetWare, UNIX or Linux Internet Explorer 11, Firefox 12.0, Chrome 20.0, Safari 4.0, or other Java-enabled browser, Cable or DSL Modem

Subscription with an internet service provider (for internet access)